

# CERTIFICATE OF LOCATION OF GOVERNMENT CORNER

EAST QUARTER Corner of Section 11, Township 107, Range 39, 5TH P.M.

STATE OF MINNESOTA, County of MURRAY

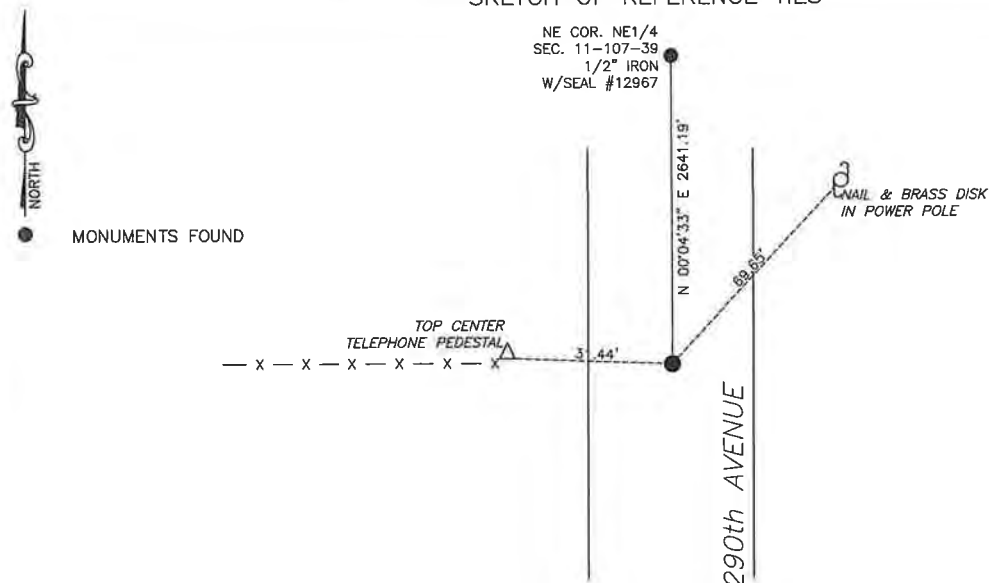
At the corner location shown on the sketch:

☒ On 4/3/2025 found a 1/2" iron with seal #12967  
DATE

☒ left monument as found, ☐ lowered monument, ☐ removed monument (explain)

☐ On \_\_\_\_\_ placed a \_\_\_\_\_  
DATE

## SKETCH OF REFERENCE TIES



Murray County  
Coordinate System NAD83 (1996)  
N: 187312.448  
E: 574699.572

WGS84  
LAT: 44°05'13.9174"  
LON: -95°28'56.6254"

Statement of evidence relative to this corner location is on back of page.

I hereby certify that this document and the data contained herein was prepared by me or under my direct supervision.

Daniel L. Bueltel  
License No. 43844

6/19/2025  
DATE

JUN 27 2025

MURRAY COUNTY RECORDER

Statement of Evidence

EAST QUARTER CORNER SECTION 11, T107N, R39W OF THE 5th P.M.

In July of 1861, J.W. Myers surveyed the township lines.

In September of 1861, L. Brockmann subdivided the township.

On October 13, 1980 Gary Martin placed a  $\frac{1}{2}$ " iron reinforcing bar with "L.S. 12967" cap on line with the found northeast and southeast corners of said section and the intersection of the east - west fence lines.

On April 3, 2025 Bueltel-Moseng Land Surveying found a  $\frac{1}{2}$ " iron with seal #12967 at the corner.